

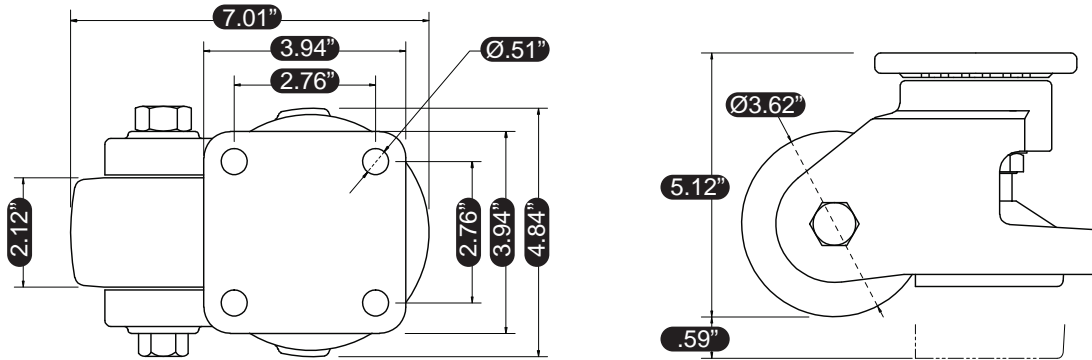
AC-1800F

Features

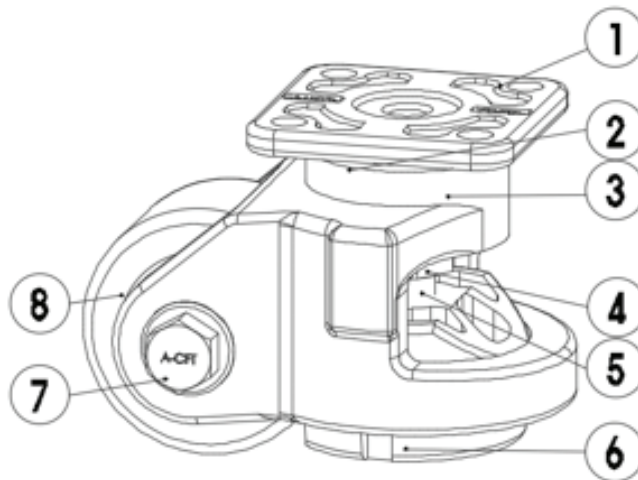
- ▶ Load Capacity
3,307 lbs/ea | 6,614 lbs w/4
- ▶ Swivel Plate Top
- ▶ Unit Weight **7.63 lbs**



Dimensions



Materials & Treatments



Parts	Materials	Treatments
1	Top Plate	SPC & S45C Zn Galvanized
2	Ball	STB2 Ni-Cr
3	Frame	ALDC12 Ivory/Powder Coated
4	Handle	-

Parts	Materials	Treatments
5	Leveler	S20C Zn Galvanized
6	Foot	ALDC12 Black
7	Pin	Swrch 1A Zn Galvanized
8	Wheel	MC Nylon Blue