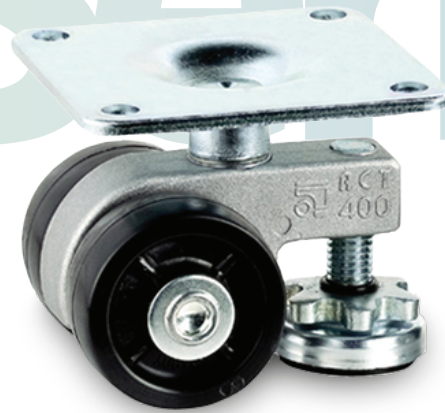


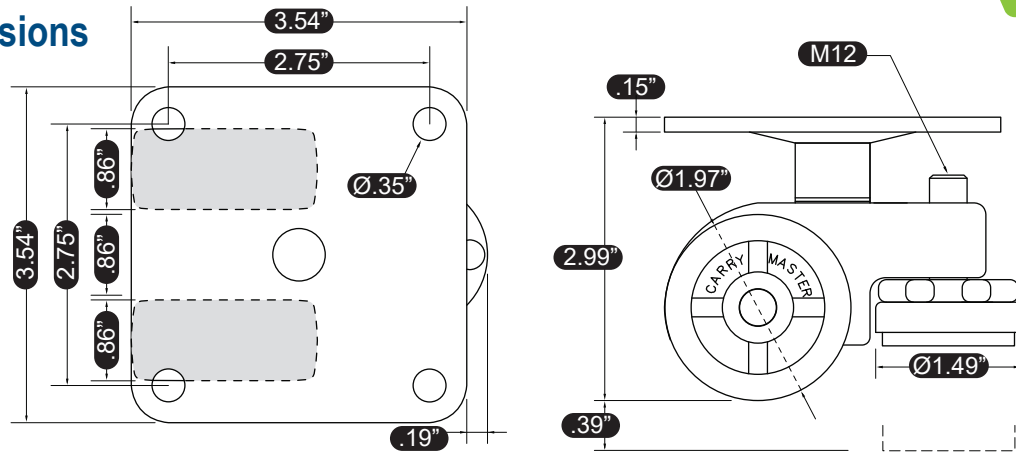
ACT-400F

Features

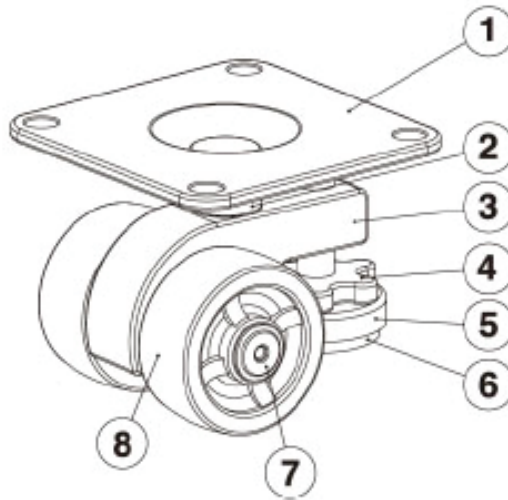
- ▶ Load Capacity
441 lbs/ea | 882 lbs w/4
- ▶ Swivel Plate Top
- ▶ Unit Weight **1.37 lbs**



Dimensions



Materials & Treatments



Parts	Materials	Treatments
1	Top Plate	SPC Zn Galvanized
2	Shaft	Swrch 10A Zn Galvanized
3	Frame	ALDC 12 -
4	Leveler	Swrch 10A Zn Galvanized

Parts	Materials	Treatments
5	Cup	SPC Zn Galvanized
6	Foot	NBR & Urethane Black
7	Pin	Swrch 10A Zn Galvanized
8	Wheel	PA6 Black