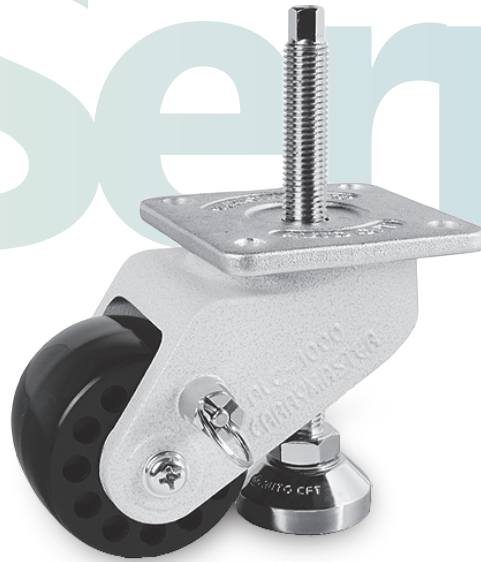


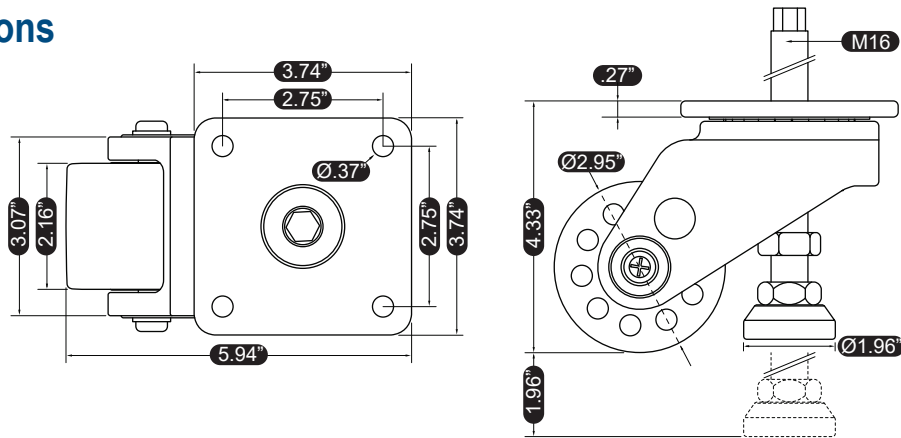
ALC-1000FB

Features

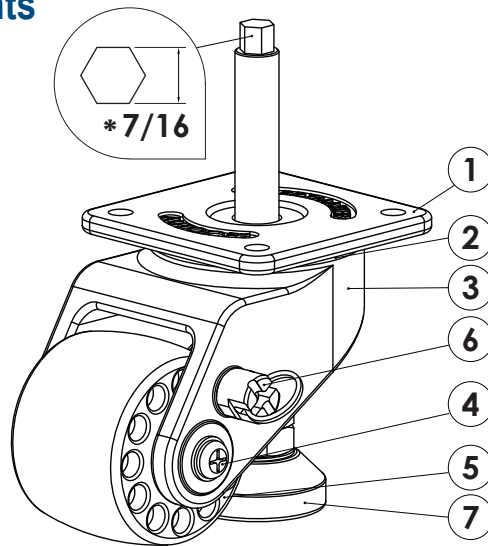
- ▶ Load Capacity
2,205 lbs/ea | 4,409 lbs w/4
- ▶ Swivel Top
- ▶ Unit Weight **4.54 lbs**



Dimensions



Materials & Treatments



*Wrench Size in SAE

Parts	Materials	Treatments
1 Top Plate	S45C	Zn Galvanized
2 Ball	STB2	Ni-Cr
3 Frame	ALDC 12	Powder Coated
4 Pin	Swrch 10A	Zn Galvanized

Parts	Materials	Treatments
5 Wheel	PA6	Black
6 Brake	Zn	Zn
7 Foot	AL	Ni